



Grade 80 Toebehoren / Grade 80 Accessories

31. Oogmoeren / Eye nuts



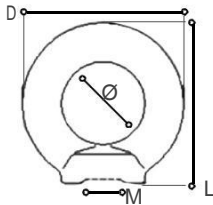
32. Oogbouten / Eye bolts



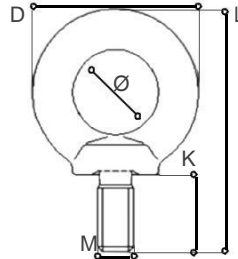
33. Stelconplaten haken / Concrete hooks



31



32



33



Item no.	WLL (90°)	WLL (0°)	Oogmoeren / Eye nuts Afmetingen / Dimensions		Ø	L	Weight (kg)
			D				
YE.8.030.06	0.15	0.40	36.00		20.00	36.00	0.04
YE.8.030.08	0.40	1.00	36.00		20.00	36.00	0.05
YE.8.030.10	0.40	1.00	45.00		25.00	45.00	0.09
YE.8.030.12	0.75	2.00	54.00		30.00	53.00	0.16
YE.8.030.14	0.24	3.00	63.00		35.00	62.00	0.24
YE.8.030.16	1.50	4.00	63.00		35.00	62.00	0.24
YE.8.030.18	2.00	5.00	72.00		40.00	71.00	0.36
YE.8.030.20	2.30	6.00	72.00		40.00	71.00	0.36
YE.8.030.22	2.80	7.00	81.00		45.00	81.00	0.58
YE.8.030.24	3.20	8.00	90.00		50.00	90.00	0.72
YE.8.030.30	4.50	12.00	108.00		60.00	109.00	1.32
YE.8.030.36	7.00	16.00	126.00		70.00	128.00	2.08
YE.8.030.42	9.00	24.00	144.00		80.00	147.00	3.11
YE.8.030.48	12.00	32.00	166.00		90.00	168.00	5.02

Item no.	WLL (90°)	WLL (0°)	Oogbouten / Eye bolts Afmetingen / Dimensions		Ø	L	Weight (kg)
			D	K			
YE.8.031.06	0.15	0.40	28.00	13.00	16.00	42.00	0.05
YE.8.031.08	0.40	1.00	36.00	15.00	20.00	51.00	0.06
YE.8.031.10	0.40	1.00	45.00	18.00	25.00	63.00	0.11
YE.8.031.12	0.75	2.00	54.00	22.00	30.00	75.00	0.18
YE.8.031.14	1.20	3.00	63.00	28.00	35.00	88.00	0.28
YE.8.031.16	1.50	4.00	63.00	28.00	35.00	88.00	0.28
YE.8.031.18	2.00	5.00	72.00	30.00	40.00	101.00	0.42
YE.8.031.20	2.30	6.00	72.00	30.00	40.00	101.00	0.45
YE.8.031.22	2.80	7.00	81.00	35.00	45.00	114.00	0.67
YE.8.031.24	3.20	8.00	90.00	38.00	50.00	128.00	0.87
YE.8.031.30	4.50	12.00	108.00	45.00	60.00	154.00	1.66
YE.8.031.36	7.00	16.00	126.00	55.00	70.00	183.00	2.65
YE.8.031.42	9.00	24.00	144.00	65.00	80.00	212.00	4.03
YE.8.031.48	12.00	32.00	166.00	70.00	90.00	238.00	6.38
YE.8.031.56	13.50	36.00	184.00	80.00	100.00	267.00	8.80
YE.8.031.64	17.00	45.00	206.00	90.00	110.00	293.00	12.40

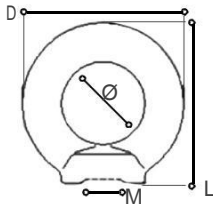
Item no.	WLL (ton)	Stelconplaten haken / Concrete hooks Afmetingen / Dimensions		Weight (kg)
YE.8.099.01	1.80		8.00	2.10



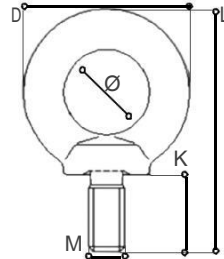
Grade 80 Accessoires / Grade 80 Zubehör

31. Ecrus à oeil /
Ösenmuttern32. Boulons à oeil /
Ösensrauben33. Crochets plaques stelcon /
Haken für Stahlankerplatten

31



32



33



Item no.	Ecrus à oeil / Ösenmuttern		Dimensions / Abmessungen (mm)		Ø	L	Weight (kg)
	WLL (90°)	WLL (0°)	D				
YE.8.030.06	0.15	0.40	36.00		20.00	36.00	0.04
YE.8.030.08	0.40	1.00	36.00		20.00	36.00	0.05
YE.8.030.10	0.40	1.00	45.00		25.00	45.00	0.09
YE.8.030.12	0.75	2.00	54.00		30.00	53.00	0.16
YE.8.030.14	0.24	3.00	63.00		35.00	62.00	0.24
YE.8.030.16	1.50	4.00	63.00		35.00	62.00	0.24
YE.8.030.18	2.00	5.00	72.00		40.00	71.00	0.36
YE.8.030.20	2.30	6.00	72.00		40.00	71.00	0.36
YE.8.030.22	2.80	7.00	81.00		45.00	81.00	0.58
YE.8.030.24	3.20	8.00	90.00		50.00	90.00	0.72
YE.8.030.30	4.50	12.00	108.00		60.00	109.00	1.32
YE.8.030.36	7.00	16.00	126.00		70.00	128.00	2.08
YE.8.030.42	9.00	24.00	144.00		80.00	147.00	3.11
YE.8.030.48	12.00	32.00	166.00		90.00	168.00	5.02

Item no.	Boulons à oeil / Ösensrauben		Dimensions / Abmessungen (mm)		Ø	L	Weight (kg)
	WLL (90°)	WLL (0°)	D	K			
YE.8.031.06	0.15	0.40	28.00	13.00	16.00	42.00	0.05
YE.8.031.08	0.40	1.00	36.00	15.00	20.00	51.00	0.06
YE.8.031.10	0.40	1.00	45.00	18.00	25.00	63.00	0.11
YE.8.031.12	0.75	2.00	54.00	22.00	30.00	75.00	0.18
YE.8.031.14	1.20	3.00	63.00	28.00	35.00	88.00	0.28
YE.8.031.16	1.50	4.00	63.00	28.00	35.00	88.00	0.28
YE.8.031.18	2.00	5.00	72.00	30.00	40.00	101.00	0.42
YE.8.031.20	2.30	6.00	72.00	30.00	40.00	101.00	0.45
YE.8.031.22	2.80	7.00	81.00	35.00	45.00	114.00	0.67
YE.8.031.24	3.20	8.00	90.00	38.00	50.00	128.00	0.87
YE.8.031.30	4.50	12.00	108.00	45.00	60.00	154.00	1.66
YE.8.031.36	7.00	16.00	126.00	55.00	70.00	183.00	2.65
YE.8.031.42	9.00	24.00	144.00	65.00	80.00	212.00	4.03
YE.8.031.48	12.00	32.00	166.00	70.00	90.00	238.00	6.38
YE.8.031.56	13.50	36.00	184.00	80.00	100.00	267.00	8.80
YE.8.031.64	17.00	45.00	206.00	90.00	110.00	293.00	12.40

Item no.	Crochets plaques stelcon / Haken für Stahlankerplatten		Weight (kg)
	WLL (ton)	Dimensions / Abmessungen (mm)	
YE.8.099.01	1.80	8.00	2.10